

ST. VALENTINE'S DAY SYMBOLS

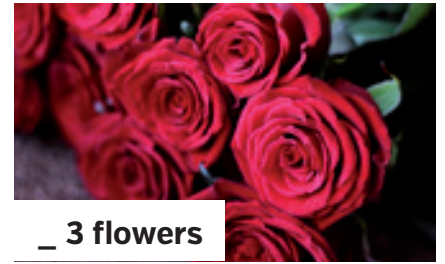
What's typical for this romantic day? Look at the pictures and match the texts with the correct pictures.



_ 1 Cupid



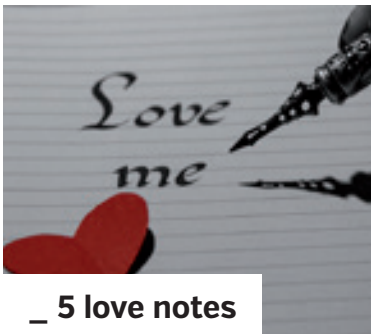
_ 2 colours



_ 3 flowers



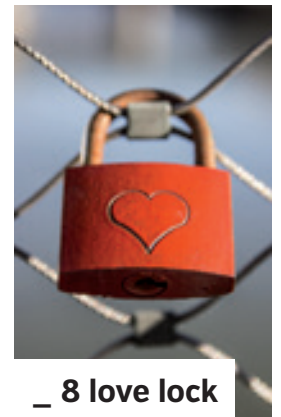
_ 4 red heart



_ 5 love notes



_ 7 love knot



_ 8 love lock



_ 6 lovebirds



_ 9 chocolates



_ 10 teddy bear

- a) symbol of love, especially red roses
- b) represents love which will last forever
- c) It's cute and cuddly and shows your love.
- d) He shoots arrows at people to make them fall in love.
- e) symbol of love
- f) sweethearts lock it to a bridge or gate to 'lock' their love forever
- g) heart-shaped chocolates a typical Valentine's Day present
- h) red (life and love), white (purity), pink (combines red and white)
- i) Birds often find mates for life.
- j) sent to those we love